



**YARET**

**YARET ACP**

**ALUMINIUM COMPOSITE PANEL**

**YARET GROUP • CHINA**

Add: No. 601 Xiangmin Rd, Songjiang Industrial Zone, Shanghai, China

Tel: +86-21-57776888 Fax: +86-21-57775992

[Http://www.yaret.com.cn](http://www.yaret.com.cn)



## ABOUT YARET GROUP



The essential philosophy of Yaret Industrial Group is recognizing and understanding the needs of our customers, which inspires our relentless development of innovative products which are unique in form and function.

Yaret headquarters and production facilities are situated on 210 000 Sq.m. in Shanghai, China.

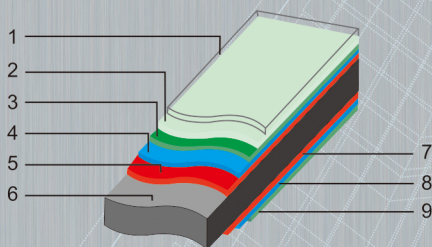
Yaret has been supplying high quality Aluminium Composite Panels to the building, construction and advertising panel industries since 1999. The company has emerged as the largest domestic producer of Aluminium Composite panels and currently supplies four continents.

Yaret currently exports to major European countries such as, France, Italy, Spain, Belgium, Germany, Cyprus, Russia, Ukraine, South America, Australia, Middle East, East Asia, South East Asia and Africa.

A high standard is achieved through stringent control procedures. The company has ISO9001 certification issued by TUV, CE certification, Swiss SGS certification and its products meet ASTM-US, DIN-410 and BS-476 quality standards. Local Chinese certifications include «Green Product» and also the highest ranking at National Aluminium and Plastic Association of China and the Chinese most prestigious achievement «Shanghai Famous Brand Title».

Yaret strives to give its customers, the community and partners the best it can offer in respect of honesty and trustworthiness. Environment, Health and Safety are very important to us and we are continually improving our processes. Our employees and customers are our biggest asset.

## ABOUT YARET ACP



- 1 – Protective Film
- 2 – PVDF Varnish Paint
- 3、9 – Ground Coating
- 4、8 – Oxidation Film Coating
- 5、7 – Aluminum Alloy Sheet
- 6 – Plastic Base Material

### Production Capacity

5 precision coating lines:  
Coating capacity: 15000 ton coils/ per year  
10 laminating lines:  
Laminating capacity: 15, 000, 000m<sup>2</sup> ACP annually.

### Flexible Manufacturing

Thickness: 1–6mm    Length: max. 8000mm  
Width: max. 1570mm  
Standard: 1220mm/ 1250mm/ 1500mm  
Finish: solid, metallic, pvdf, Polyester, brushed, Wood-grain.

### Colors

According to color chips or RAL colors.

### Product Series

- 1- PVDF Coating ACP
- 2- PET Coating ACP
- 3- Fire-Resistant core ACP
- 4- Mirror ACP
- 5- Brushed ACP
- 6- Granite(wood) coated ACP
- 7- Chameleon Coating ACP
- 8- Nano ACP







## Physical Properties

Panel Dimensions	3mm	4mm
Panel Thickness	3mm	4mm
Aluminium Thickness	0.3mm	0.5mm

Product Properties		
Weight	4.1 kg m <sup>2</sup>	5.8 kg m <sup>2</sup>
Sound Absorbtion NRC	0.05	0.05
Sound Absorbtion R <sub>w</sub> db	24	25
Water Absorbtion % By Volume	0.01	0.01
Thermal Performance R Values	0.0057	0.0012
Peel Strength 180°	>5 N/mm	
Stripping Roller		>130 N. mm/mm

Dimensional Tolerances	
Thickness	± 0. 2 mm
Width	± 2 mm
Length	± 3 mm
Diagonal	± 5 mm
Thermal Expansion	2. 4mm/m @100°C Temp Difference
Aluminium Thickness	± 0. 02 mm

Surface Properties	
Paint Thickness	PVDF Coating ≥27um Polyester Coating ≥16um
Pencil Hardness	H
Toughness of Coating	2T no craking
Temperature Resistance	-50°C to 70°C
Reverse Strength Crosshatch	50 kg cm <sup>2</sup> no pick of
Boiling Water Resistance	Boiling for 2hrs without change
Acid Resistance	Immerse Surface in 5% Hc1 for 24hrs without change
Alkali Resistance	Immersed Surface in 2% NaOH for 24hrs without change
Oil Resistance	Immerse Surface in 20# engine oil for 24hrs without change
Solvent Resistance	Cleaned 100 times with Dimethylbenzene without change





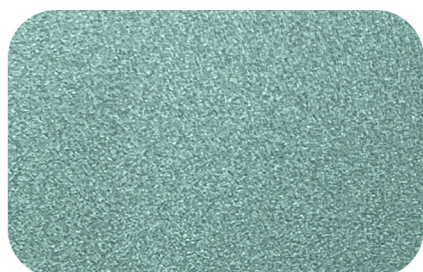
**YT-001** Bright Silver



**YT-002** Metallic Silver



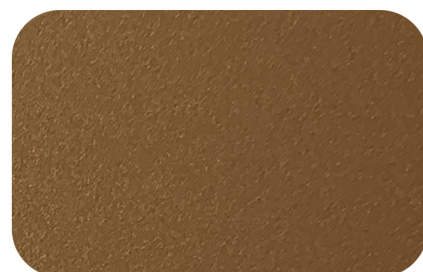
**YT-003** Champagne Gold



**YT-004** Jade Green Silver



**YT-005** Bright Gold



**YT-006** Copper



**YT-007** Pure White



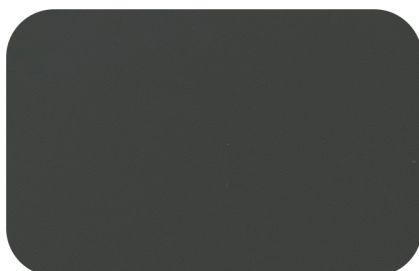
**YT-008** Beige White



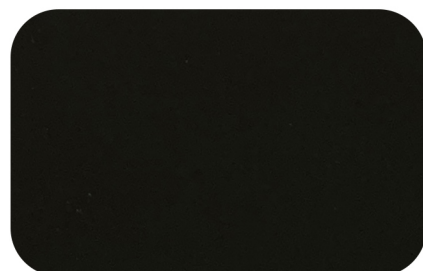
**YT-009** Ivory White



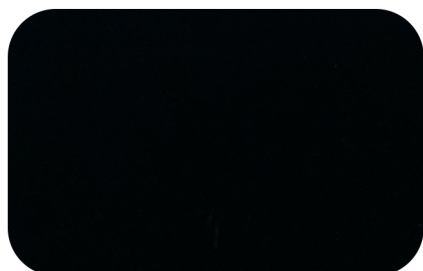
**YT-020** Metallic Black



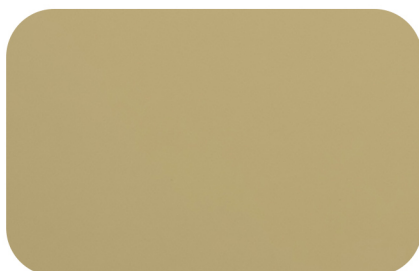
**YT-022** Grey



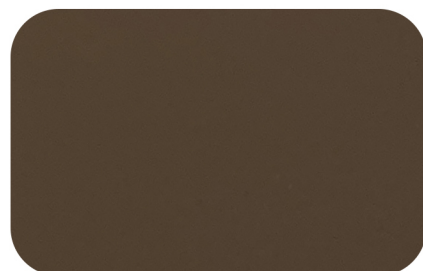
**YT-023** Coffee



**YT-024** Black



**YT-033** Tender Apricot



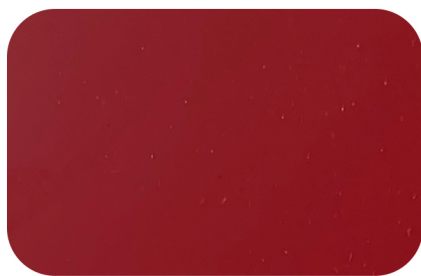
**YT-066** Beige Brown





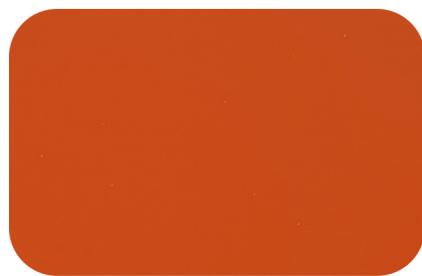
**YT-010**

China Red



**YT-011**

Dark Red



**YT-012**

Orange



**YT-013**

Light Blue



**YT-014**

Dark Blue



**YT-015**

Sea Blue



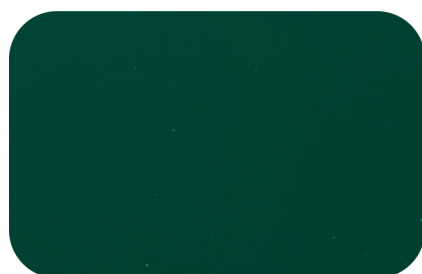
**YT-016**

Finland Green



**YT-017**

Light Green



**YT-018**

Postal Green



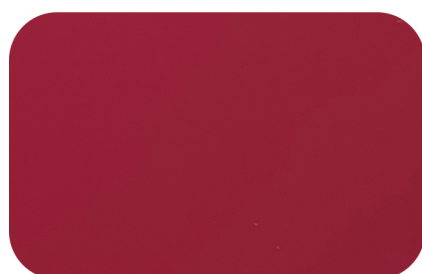
**YT-019**

Lemon



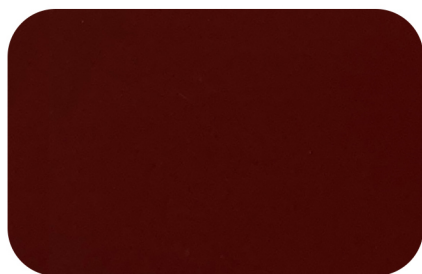
**YT-021**

Violet



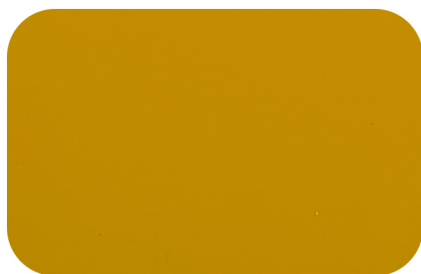
**YT-025**

Fuchsia



**YT-027**

Vinous



**YT-064**

Golden Yellow



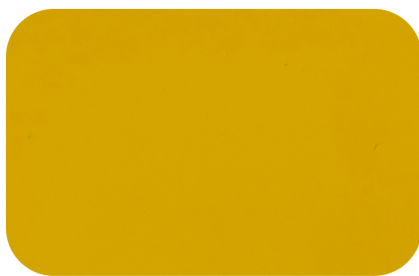
**YT-81800**

Fresh Grass





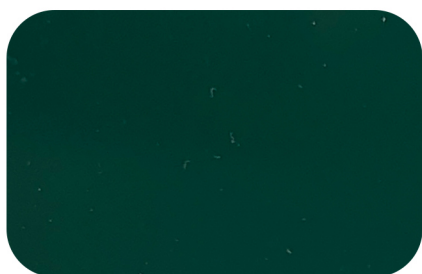
**YT-3020** Red Gloss



**YT-G1023** Yellow Gloss



**YT-G5002** Blue Gloss



**YT-G83024** British Green Gloss



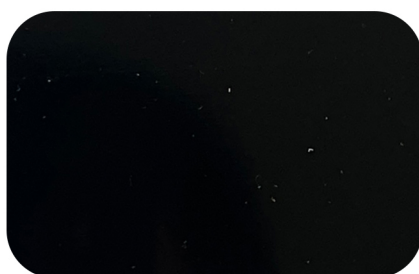
**YT-G1015** Ivory Gloss



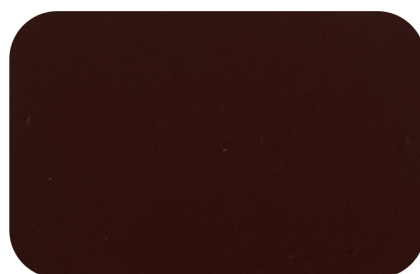
**YT-G007** White Gloss



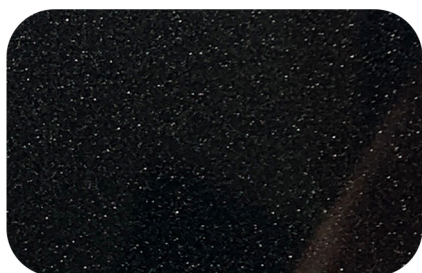
**YT-M007** White Matte



**YT-G024** Black Gloss



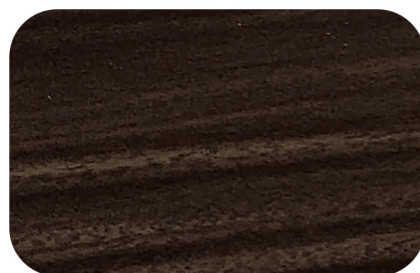
**YT-067** Red Brown



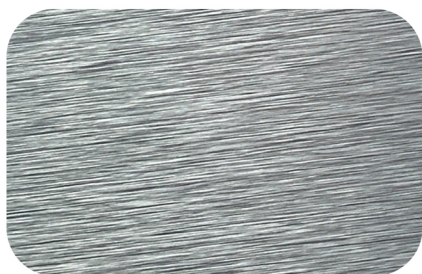
**YT-77319** Sparkle Black



**WD-001**



**WD-002**



**LS-001** Brushed Silver



**LS-002** Brushed Gold



**JM-001** Mirror Silver